

catbase⁴

The Power to Publish

Are you spending too much time publishing your data (catalogue, directory, price list, etc.)?

Do you want to be able to publish your data quickly and easily, in a variety of different formats?



What is CatBase?



CatBase is a database publishing application that makes it easy to publish your data in print, as files, and on the Internet. It does this by automatically formatting the text (and, with certain publishing destinations, pictures) according to specifications that you set up in CatBase.

You can use the CatBase database to manage your data completely, or you can use CatBase simply to format data that you maintain on another system. To do this, you export the data from your other system and then import it into CatBase.

Once your data is in the CatBase database, it can be published in various ways:

- In print
- As delimited (plain text) files
- As HTML documents
- As a Web server.

You can also send faxes, emails, and letters, and produce labels directly from the database if it contains contact details.



Tell me more about:

Publishing Data



In Print



As Text Files



As HTML Documents



On the Internet

Communicating from the Database



Emails



Faxes



Letters



Labels



The Database



Technical Support



Who's Using CatBase?



Ordering

Publishing Data in Print with CatBase



With CatBase you can publish your data in print using any of the following programs:

- QuarkXPress
- PageMaker
- Multi-Ad Creator (Macintosh only)
- PagePlus
- Any program that supports RTF tags

How it works

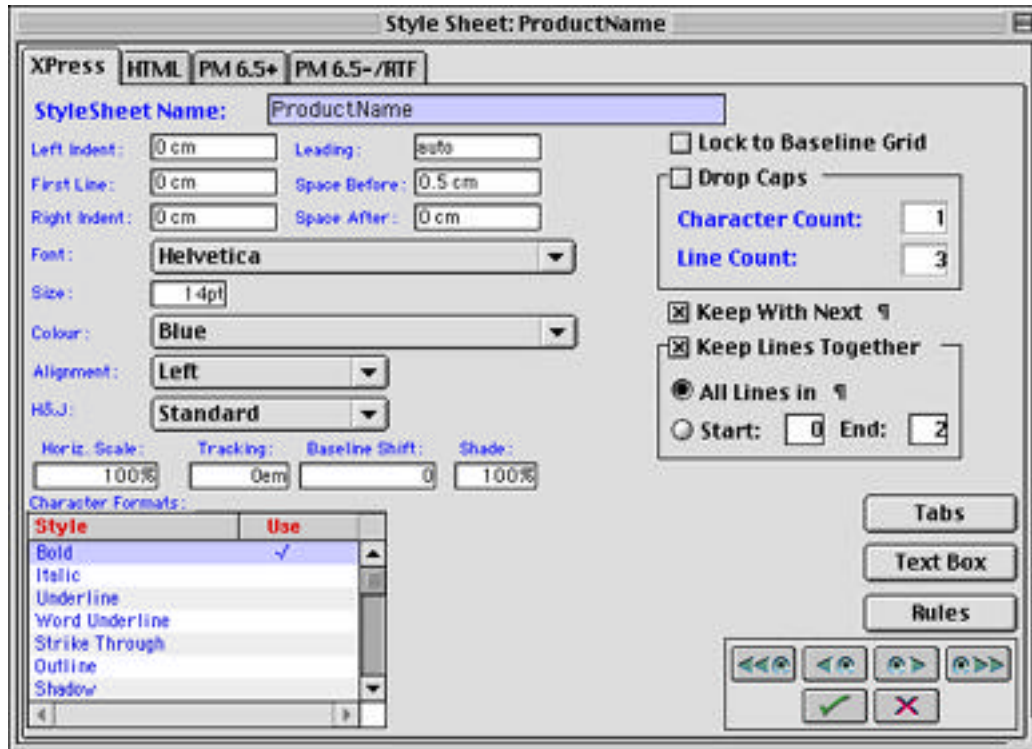
1. You set up Style Sheets, which determine the formatting on a paragraph level.
2. You set up Export Style Sheets, which describe which data to include and how to sort and format it.
3. Select the data you want to publish and export it from the database using one of your Export Style Sheets. This creates a text file which contains your data plus all the formatting instructions.
4. Import the text file into your page layout template.
5. The data is automatically organised and formatted according to your specifications.

Click on the arrow to see an example using QuarkXPress.



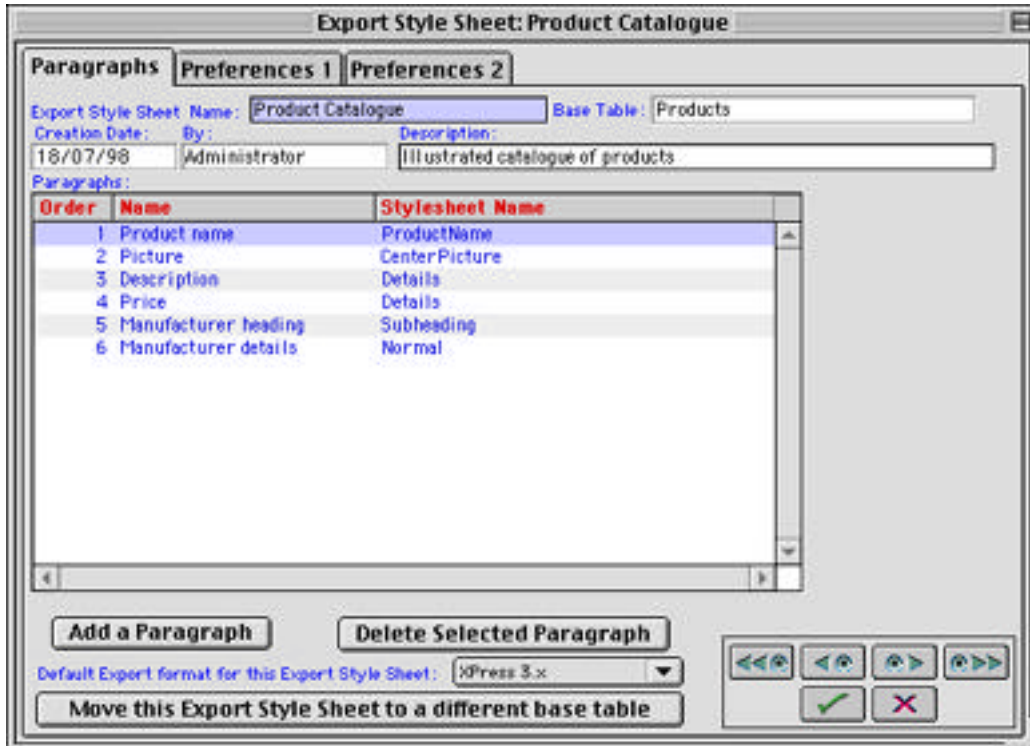
Publishing with QuarkXPress: 1

1. Set up one or more Style Sheets:



Publishing with QuarkXPress: 2

2: Set up one or more Export Style Sheets:

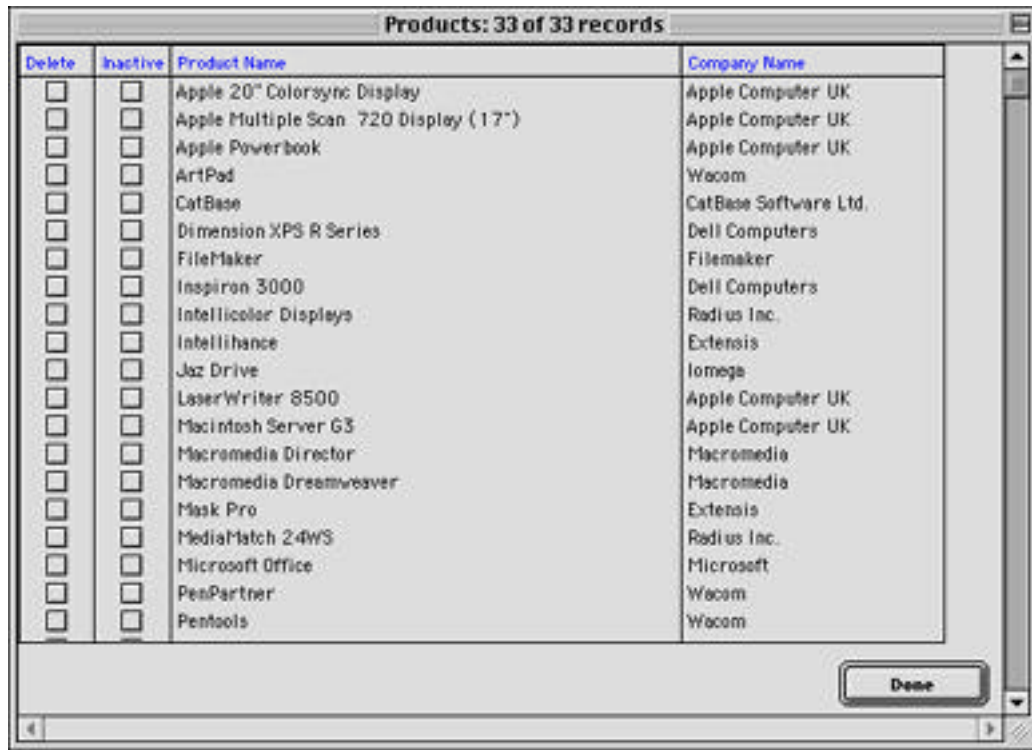


Export Style Sheets tell CatBase what data to include and how to sort and format it.



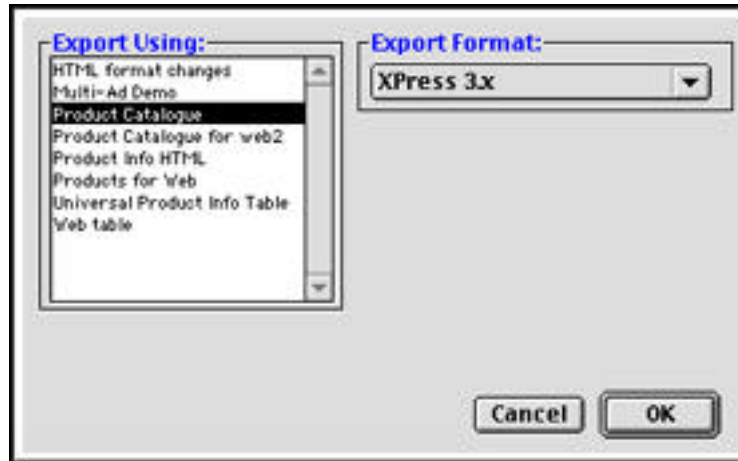
Publishing with QuarkXPress: 3

3: Select the records you want to publish:



Publishing with QuarkXPress: 4

4: Choose Export ... from the File menu and select an Export Style Sheet and Export Format:







- 5: Click on OK and export the data to a text file.
- 6: Open up your page template in QuarkXPress.



Publishing with QuarkXPress: 4

7: Import the data into your Quark template. The text (and, optionally, pictures) is automatically formatted for you:

<p>Apple 20" Colorsync Display</p>  <p>The Apple Colorsync Display (also known as Apple Vision 850) is a superior-quality colour display that provides excellent image quality in a large-screen display.</p> <p>It's a good match for powerful, flexible systems such as the Power Macintosh 8000, 9000 and G3 series models.</p> <ul style="list-style-type: none">• Screen size: 20 inches (diagonal)• Viewable image size: 19.0 inches (diagonal)• Resolution: Various options• Dot pitch: 0.25-mm aperture grille pitch• Picture tube: Sony Trinitron <p>Price: £1215.0</p>	<p>Apple Powerbook</p>  <p>Standard features include:</p> <ul style="list-style-type: none">• Lithium ion battery for up to 3.5 hours of life under normal use• Built-in 10BASE-T Ethernet and LocalTalk connectors• 16MB on-board output port, DVD3D graphics acceleration through integrated video controller• Two Type II PC Card slots with CardBus capability• 16-bit stereo input/output ports• Two built-in stereo speakers• 4Mbps IRDA port• Mac OS 9.1 <p>Price: £1645.0</p>
<p>MANUFACTURER:</p>	
<p>Apple Computer UK Tel: 0181 563 1199</p> <p>Apple Multiple Scan 720 Display (17")</p>  <p>The Apple Multiple Scan 720 is a 17-inch, half-page display designed for the demanding user who wants large-screen performance at a reasonable price.</p>	<p>Apple Computer UK Tel: 0181 563 1199</p> <p>ArtPad</p>  <p>ArtPad II is Wacom's smallest pressure-sensitive graphics tablet, with an active surface area of 4" x 5" and 256 levels of pressure. The tablet is ideal for business professionals, educators and children to easily create animation, original artwork</p>

(Note: picture placement requires the use of the Xtags Quark Xtension.)



Publishing as Text Files

It can be useful to create delimited text files containing your data, so that the data can be transferred to another system or used for merging into letters using a word processor, for example.

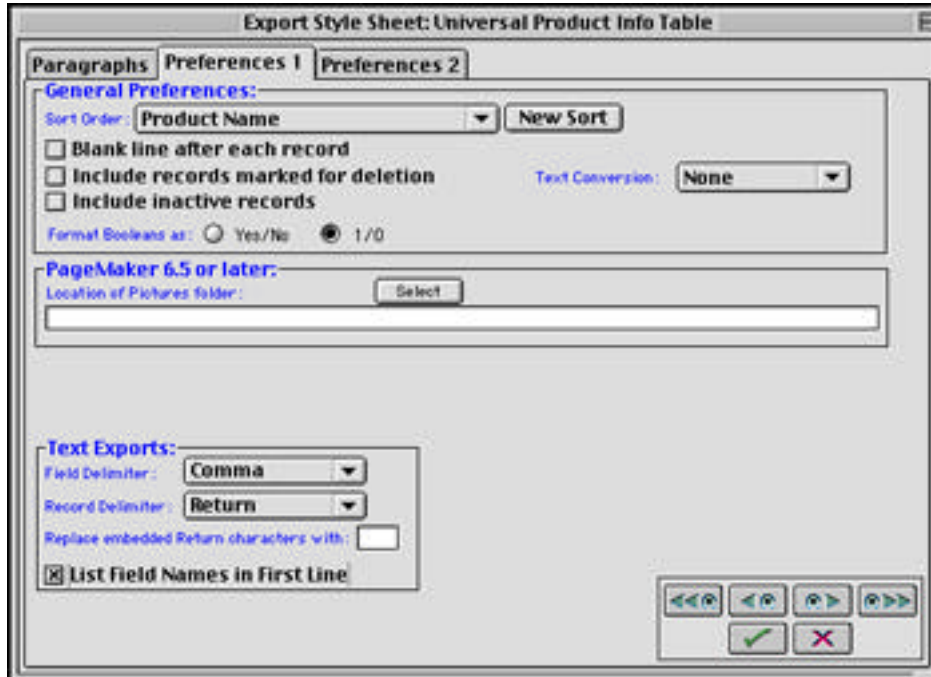
With CatBase you can easily create tab- or comma-delimited or fixed-length text files.

Click on the arrow to see an example showing how to create a comma-delimited text file.



Publishing as Text Files: 1

1. Set up an Export Style Sheet and set the relevant preferences on the Preferences 1 page:

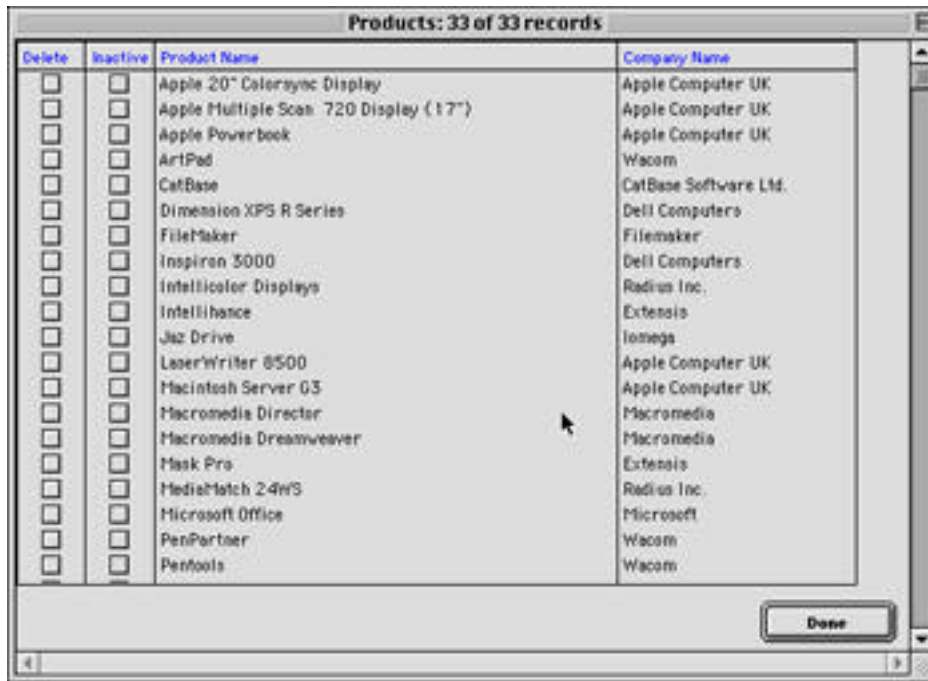


(This example can be found in the Demo Database.)



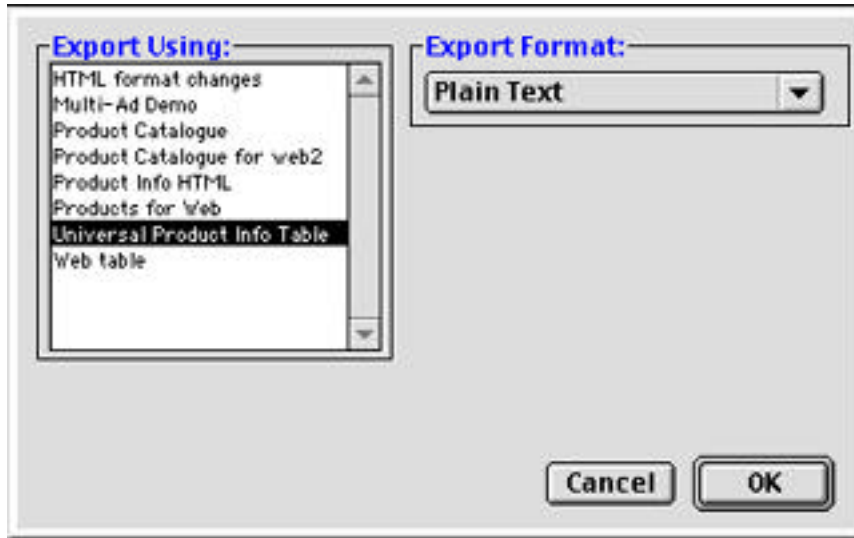
Publishing as Text Files: 2

2. Select the records you want to export:



Publishing as Text Files: 3

3. Choose Export ... from the File menu and select the Export Style Sheet and Export Format you want to use:



4. Click on OK and export the data to a text file.

Publishing as Text Files: 4

When the export has finished, you will have a text file that looks something like this:

```
"Apple 20" "Colorsync Display" "£1,215.00" "£972.00" "Apple Computer UK" "05/09/98"
"Apple Multiple Scan 720 Display (17") "£528.00" "£422.40" "Apple Computer UK" "12/06/98"
"Apple Powerbook" "£1,645.00" "£1,316.00" "Apple Computer UK" "27/06/98"
"ArtPad" "£115.00" "£92.00" "Wacom" "00/00/00"
"CatBase" "£895.00" "£716.00" "CatBase Software Ltd." "19/11/98"
"Dimension XPS R Series" "£2,199.00" "£1,759.20" "Dell Computers" "29/07/98"
"FileMaker" "£199.00" "£159.20" "Filemaker" "29/07/98"
"Inspiron 3000" "£2,199.00" "£1,759.20" "Dell Computers" "27/06/98"
"Intellicolor Displays" "£1,466.00" "£1,172.80" "Radius Inc." "29/07/98"
"Intellihance" "£99.00" "£79.20" "Extensis" "27/06/98"
"Jaz Drive" "£249.00" "£199.20" "Iomega" "00/00/00"
"LaserWriter 8500" "£1,316.00" "£1,052.80" "Apple Computer UK" "27/06/98"
"Macintosh Server G3" "£2,080.00" "£1,664.00" "Apple Computer UK" "27/06/98"
"Macromedia Director" "£999.00" "£799.20" "Macromedia" "00/00/00"
"Macromedia Dreamweaver" "£195.00" "£156.00" "Macromedia" "27/06/98"
"Mask Pro" "£249.00" "£199.20" "Extensis" "00/00/00"
"MediaMatch 24WS" "£1,799.00" "£1,439.20" "Radius Inc." "10/10/98"
```

Publishing as HTML Documents

You can publish your data as HTML documents which can be viewed by any Web browser, such as Internet Explorer or Netscape Navigator. This format is very useful for displaying on your web site or for distribution.

Through your Export Style Sheet, you control such factors as the number of items to be displayed on a page, page header and footer, whether to include pictures, the background picture or colour for the pages, and so on.

You can also have an Index page automatically created.

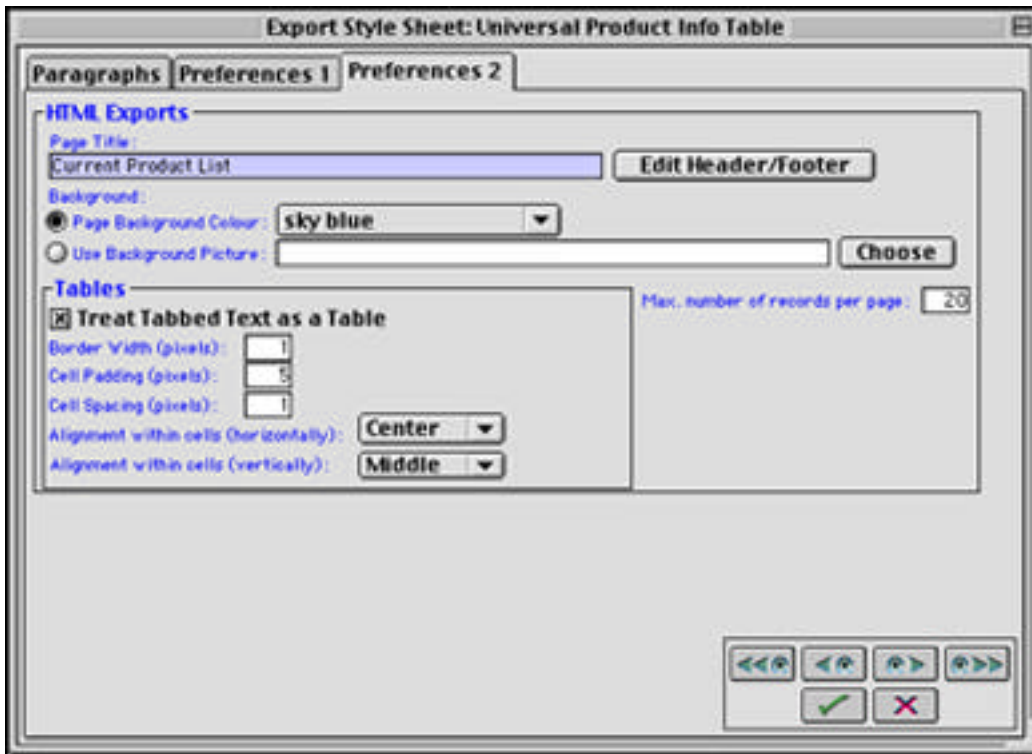
You can optionally publish the data as a table.

Click on the arrow to see an example of publishing HTML documents containing tables of your data.



Publishing as HTML Documents: 1

1. Set up an Export Style Sheet:

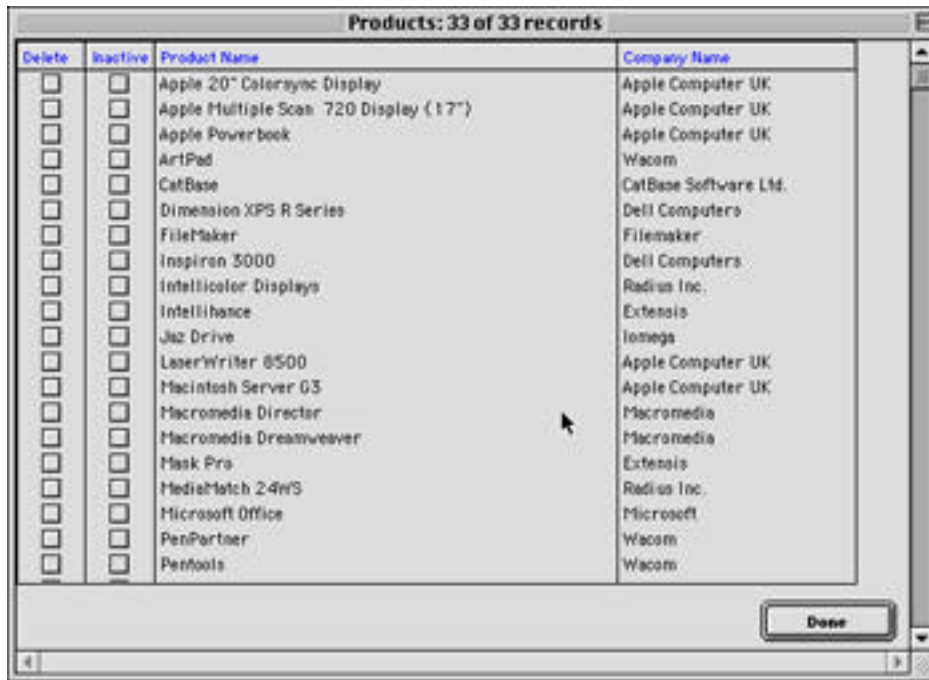


In this example we have told CatBase to create a table.



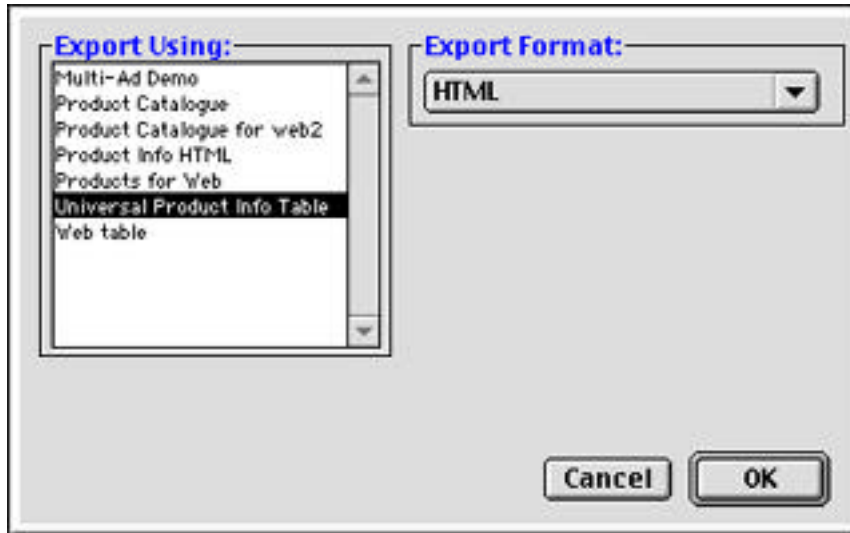
Publishing as HTML Documents: 2

2. Select the records you want to publish:



Publishing as HTML Documents: 3

3. Choose Export ... from the File menu and select the appropriate Export Style Sheet and Export Format:



4. Click on OK and export the data. CatBase will create a series of HTML documents (the number of documents depends upon the number of records being exported, and the number of records per HTML page).



Publishing as HTML Documents: 4

5. Start up your web browser and open up one of the HTML documents CatBase just created. Our example page looks like this:

Here's a listing of our current product line-up:

Product Name	Price	Disc. Price	Supplier	Date Updated
Apple 20" Colorsync Display	£1,215.00	£972.00	Apple ComputerUK	05/09/98
Apple Multiple Scan 720 Display (17")	£528.00	£422.40	Apple ComputerUK	12/09/98
Apple Powerbook	£1,645.00	£1,316.00	Apple ComputerUK	27/05/98
ArtPed	£115.00	£92.00	Wacom	00/00/00
CatBase	£895.00	£716.00	CatBase Software Ltd	19/11/98
Dimension XPS R Series	£2,199.00	£1,759.20	Dell Computers	29/07/98
FileMaker	£199.00	£159.20	Filemaker	29/07/98
Inspiron 3000	£2,199.00	£1,759.20	Dell Computers	27/05/98
Intelcolor Displays	£1,466.00	£1,172.80	Radius Inc.	29/07/98
Intelligence	£99.00	£79.20	Extensis	27/05/98
Jaz Drive	£249.00	£199.20	Imega	00/00/00
LaserWriter 8500	£1,316.00	£1,052.80	Apple ComputerUK	27/05/98
Macintosh Server G3	£2,080.00	£1,664.00	Apple ComputerUK	27/05/98
Macromedia Director	£999.00	£799.20	Macromedia	00/00/00
Macromedia Dreamweaver	£195.00	£156.00	Macromedia	27/05/98
Mark Pro	£249.00	£199.20	Extensis	00/00/00



Running CatBase as a Web Server



Your CatBase database can function as a web or intranet server. You don't need any additional software; just install CatBase on a server that is appropriately connected to the Internet or your office network.

We provide a sample web site so that you can try the web server feature. You just need to change a few settings and you're in business! You'll probably want to design your own web site, though, and we provide the "hooks" into the database so that you can display your data however you want.

Running CatBase as a web server is described briefly in Chapter Three in the Demo Manual, and in detail in Chapter Six in the Reference Manual.

Click on the arrow to see a screen shot showing the sample web site.



Running CatBase as a Web Server

This is what the sample web site looks like:



You can easily change the banner and the description, or you can design a completely new web site.



Sending Emails

If your database contains information about people or companies, including their email addresses, you can send emails directly from the database.

You can send individual emails to one or two specific contacts, or you can send bulk emails to a selection of contacts in one go.

You just need to have an internet connection set up on your computer, complete an Email Account screen in CatBase, and then create and send your emails:

Email Entry

Name:

Send: Single email to:
 Bulk mail on database field:

Send via:

Subject:

LAST CHANCE! ADS FOR SPRING ISSUE CLOSE ON MONDAY
I just wanted to remind you that we are closing the advertising for our spring issue on Monday.
So I need to know right away whether you want that ad!
Best regards,
Pat Belsky

Sending Faxes



If you are using a Macintosh computer, and if you have details on companies in your database, you can send faxes directly from the database:

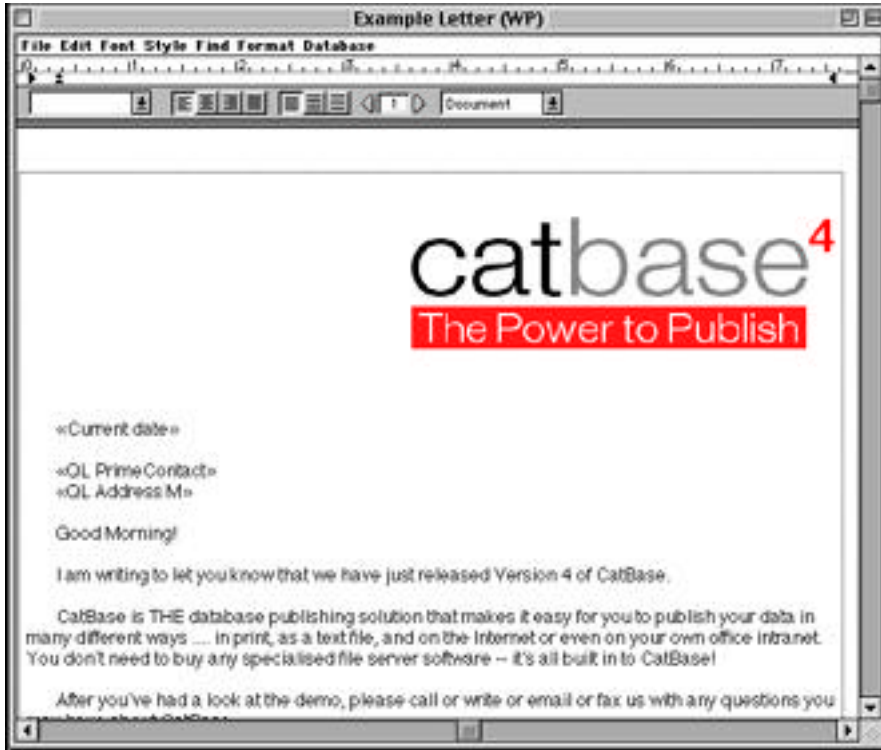


Note: This feature requires the add-on word processing module, 4DWrite.



Letters

If your database contains name and address details, you can send letters directly from the database:

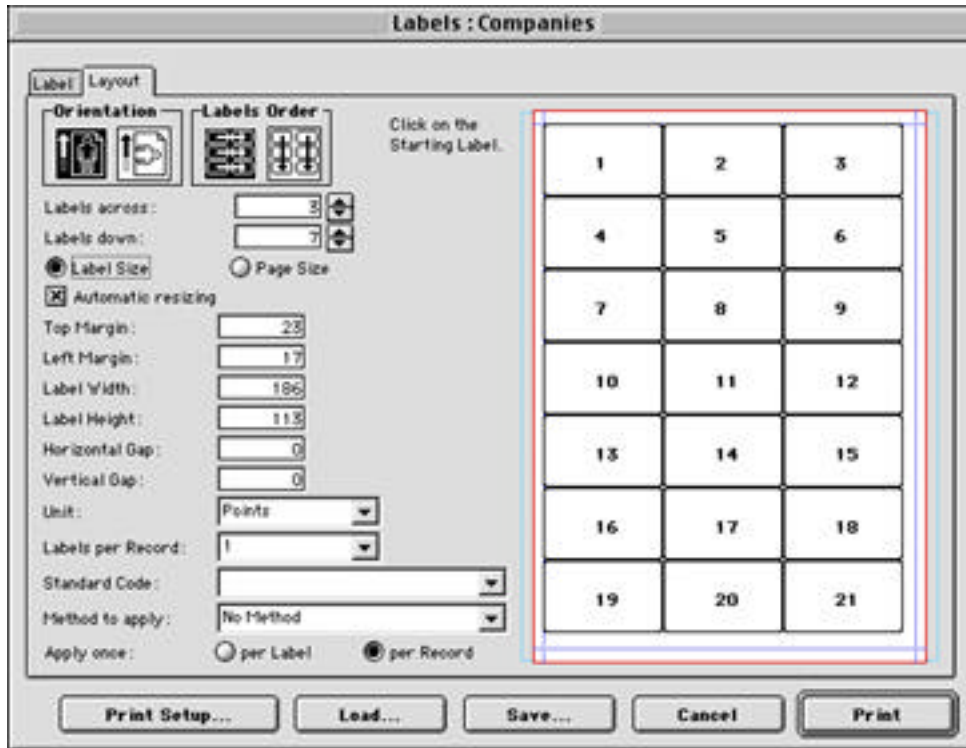


Note: This feature requires the add-on word processing module, 4DWrite.



Labels

CatBase's built-in label editor makes it easy to create labels in any size, with graphics and data merged from the database:



The Database



CatBase is a relational database in which four basic tables have been set up. We have named these tables Companies, Products, Contacts, and Product Details, to reflect the way in which they are most likely to be used; however, you can name them anything you like.

Each table comprises a number of fields of various types. Again, we have given the fields names that you might like to use, but you can change the field names, and you can specify which fields should or should not appear on the data entry screens.

You can do all the usual database functions with CatBase (searching, sorting, reporting, and so on), and in addition you can publish the data in various different ways (as described in the Publishing Data section of this document).

Your data can be entered into the database manually, or it can be imported from just about any other database or spreadsheet on any platform.

CatBase runs on Windows 95, 98 and NT, and Macintosh computers.



The Database: 2



CatBase is available in two single-user versions and also as a multi-user (network) version.

CatBase single-user allows you to enter any number of records into each table.

CatBase LE is the lower-cost version suitable for smaller projects. It is limited to 1,000 records per table.

The database has been set up so that it is very versatile and can handle many different types of projects. However, if you need it to do something special, it can be customised in any way necessary.

If you would like to explore CatBase in more detail, we suggest that you get the fully functional Demo version. This does everything that the full program does, but is limited to 50 records per table. The Demo can be downloaded from our web site at www.catbase.com, or you can call us on and request a CD (0700 CATBASE or 0700 2282273). You can also look at the Reference Manual, which describes the program's features in detail, by downloading chapters from the web site or finding them in the Documentation folder on the CD.



Importing Data

Data can be imported into CatBase from virtually any other database or spreadsheet, from any computer system. You simply save the data from that application into a delimited text file. The format of the file can be tab- or comma-delimited, or fixed-length. You then set up an Import Format in CatBase, which lets you specify the fields to be imported and their order, the type of the text file, and then previews a few records from the import file so that you can check that everything is set up correctly.

Imported data can be used to update existing data in the database. For example, you may receive a file containing updated product prices from your accounting system. The file could be imported into the CatBase database, the product records matched up according to their product codes, and the prices automatically updated in the database.

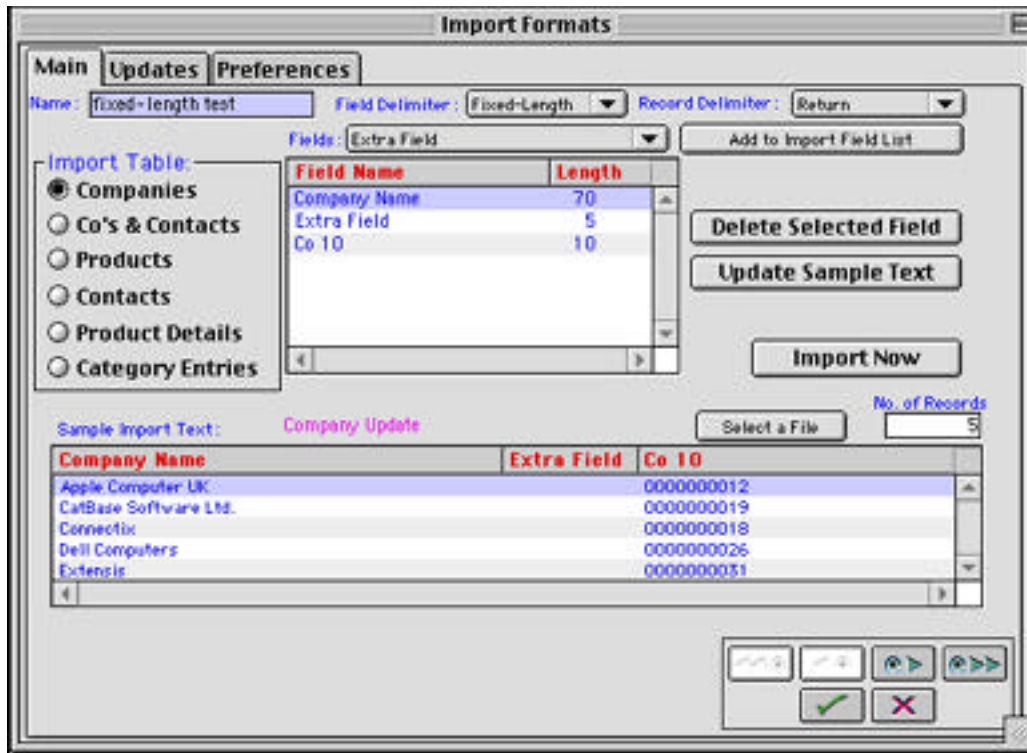
You'll find an example import in Chapter Seven of the Demo Manual, and importing is described in detail in Chapter Eight of the Reference Manual

Click on the arrow to see an example of an Import Format.



Importing Data: 2

An example Import Format:



In this example, there is a field in the import file that we don't need; by inserting an "Extra Field" we have told CatBase to ignore this field.

Technical Support



Technical support is provided free of charge for six months after purchasing CatBase. Thereafter a Technical Support Contract can be purchased for £100 per year (single-user); £300 per year (multi-user). All Technical Support contracts include free program upgrades.

Support is provided by telephone, fax, and email.

We also provide on-site training. Please contact our Sales Department for details.



Who's Using CatBase?

Bartercard: Member Directory



National Directory



FURNITURE RETAILERS

THE PINE STORE

We supply ranges of quality pine furniture for many years in the home. Also we have licensing for health spas, hotels, and day centres in areas locally.

Address: Unit 1, Brookmead Lane
Barnet
Herts
NN4 3JL

Contact: Judith Bartercard
or Andrew Street
Phone: 01700 493218
Fax: 01700 493231

FRINGLES LTD

Best furniture for every room in the home. Discount and matched with options to meet the most demanding individual needs.

Address: 111-113, Market Road
Epsom
Surrey
KT8 1JL

Contact: Nigel Ripley
Phone: 01879 651491
Fax: 01879 652497

ADJUSTABLE BED CO TRADING AS BEDS BEDS BEDS

Over 20 years of experience, product range and service wide. Home care care in years.

Delivery available in regular.

Address: 75-79, North End Road
Hull
Yorkshire
YO1 1JN

Contact: James Hodge
Phone: 01482 581 9080

GARAGE SERVICES

M.P. MOTOR REPAIRS

Repair for all makes and models. Better and cheaper than anywhere else in Essex. A.D.T. Approved and mobile.

Address: 4, East Street
Beverly
Middx
TK9 6BJ

Contact: Peter East
Phone: 0181 308 0165
Fax: 0181 308 8074

CHARTERS OF ALDERSHOT

Just 10 mins. driving off open of vehicles, parts accessories, MOT. See for ourselves around either.

Address: Station St
Witley
Surrey
GU24 0JL

Contact: John Leggard
Phone: 01297 344346
Fax: 01297 344350

JE ENTERPRISES

Same day car repairs, mobile, battery services, and air MOT checks, all main trading companies, all work guaranteed. Call before and delivery address: 555, London Road

Woking
Surrey
GU24 0JL

Contact: John Brown
Phone: 01784 413051

AUTOWASH MOTORIST CENTRE

Car Washes and more. Specialist in alloy wheels, with ultrasonic spray washing. Also MOT's, battery, service and more. Country car specialists.

Address: 125/28 High Drive
Barnet
Herts
SN4 0JL

Contact: Eric's Wilson
Phone: 0181 206 2188
Fax: 0181 206 2122

PRESTIGE & PERFORMANCE VEHICLE SERVICES

For serious drivers, including minor cars, and light commercial vehicles including A.D.T. towing, market survey, and engine rebuild etc.

Address: 120, The Road
Widmoreham
Hants
RG27 2JL

Contact: Alan Brown
Phone: 01494 285 1439

NEW STREET MOTORS

MOT, battery, service and repair of all makes of vehicles. Free estimates and quotes.

Address: 225-230
High Street
Barnet
Herts
SN4 0JL

Contact: Mark Brown
Phone: 01753 818300
Fax: 01753 818301

CROSSBOW ACCOUNT SERVICES

Full and full. Software for all types of companies. Also software for all types of companies. Also software for all types of companies.

Address: Unit 11, Colwell Ind Estate
Colwell
Leics
LE17 3JL

Contact: Steve Brown
Phone: 0181 206 2212
Fax: 0181 206 2213

MIDWINTER OF MILDENHEAD

Car Washes and more. Specialist in alloy wheels, with ultrasonic spray washing. Also MOT's, battery, service and more. Country car specialists.

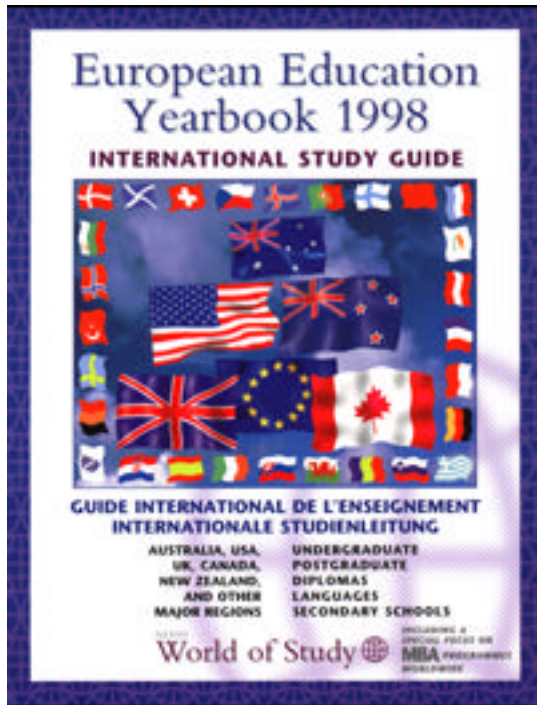
Address: 89, Colchester Rd
Maidenhead
Berks
SL6 4JL

Contact: Richard (Richard)
Phone: 01344 622730
Fax: 01344 622730



Who's Using CatBase?

Education Yearbook: Directory of International Colleges



94 UNITED STATES MAJOR HIGHER EDUCATION INSTITUTIONS		
<p>NEW YORK UNIVERSITY'S SCHOOL OF CONTINUING EDUCATION 100 W. 11th St. New York, NY 10011-3298, USA Tel: +1 212 850 5500 Fax: +1 212 850 5000 E-mail: ce@nyu.edu Website: www.nyu.edu Number of students: Faculty program</p>	<p>Faculty members offer a variety of courses designed to provide students with experiential learning in addition to their academic program. Faculty members are nationally and internationally recognized for their expertise in their fields. Language of instruction: English. Degree offered: English language courses offered through an intensive program.</p>	<p>NEW YORK Institutions offered: 01. August 1. Facilities: Career Advisory, Communications and Media, Hospitality, Industry Studies, and Travel and Tourism Management. Admissions procedures: Application deadline: 11/20/98. No foreign fees. 12 Month for foreign fees. No fee for fee test. Minimum language proficiency: English not native speakers. GRE 1 required.</p>
<p>YALE UNIVERSITY, with more than 100 international offices 360 Prospect Street, New Haven, CT 06511, USA Contact: Director of International Studies Tel: +1 203 437 3333 Fax: +1 203 437 3333 E-mail: ce@yale.edu Website: www.yale.edu Number of students: 14,000 Number of countries: 140</p>	<p>Yale University's international presence is centered in the Yale Fellows program, an intensive, interdisciplinary program of study in the United States. Faculty members are nationally and internationally recognized for their expertise in their fields. Language of instruction: English. Degree offered: English language courses offered through an intensive program.</p>	<p>NEW YORK Wide subject offered: Academic, International Studies, Business, Marketing, Liberal Arts, Hospitality, Career Studies, International Studies, Economics, & American Studies. Admissions procedures: Faculty admission. Note for nonnative speakers: application fee. Note for nonnative speakers: application fee. GRE 1200 required for nonnative speakers. English proficiency test required before enrollment fee.</p>
<p>MANHATTAN POLYTECHNIC INSTITUTE 140 West Street, New York, NY 10013, USA Contact: Admissions Office Tel: +1 212 696 6000 Fax: +1 212 696 6000 E-mail: admissions@manhattan.edu Website: www.manhattan.edu Number of students: 14,000 Number of countries: 140</p>	<p>Manhattan Polytechnic Institute is a leading provider of international education in the United States. Faculty members are nationally and internationally recognized for their expertise in their fields. Language of instruction: English. Degree offered: English language courses offered through an intensive program.</p>	<p>NEW YORK Admissions procedures: Faculty admission. Note for nonnative speakers: application fee. Note for nonnative speakers: application fee. GRE 1200 required for nonnative speakers. English proficiency test required before enrollment fee.</p>
<p>STATE UNIVERSITY OF NEW YORK COLLEGE OF PLATTSBURGH 140 West Street, New York, NY 10013, USA Contact: Admissions Office Tel: +1 212 696 6000 Fax: +1 212 696 6000 E-mail: admissions@stateuniv.edu Website: www.stateuniv.edu Number of students: 14,000 Number of countries: 140</p>	<p>State University of New York College of Plattsburgh is a leading provider of international education in the United States. Faculty members are nationally and internationally recognized for their expertise in their fields. Language of instruction: English. Degree offered: English language courses offered through an intensive program.</p>	<p>NEW YORK Admissions procedures: Online application fee. Note for nonnative speakers: application fee. Note for nonnative speakers: application fee. GRE 1200 required for nonnative speakers. English proficiency test required before enrollment fee.</p>
<p>ASHLAND UNIVERSITY 100 College Avenue, Ashland, MA 01821, USA Contact: Admissions Office Tel: +1 413 883 3333 Fax: +1 413 883 3333 E-mail: admissions@ashland.edu Website: www.ashland.edu Number of students: 14,000 Number of countries: 140</p>	<p>Ashland University is a leading provider of international education in the United States. Faculty members are nationally and internationally recognized for their expertise in their fields. Language of instruction: English. Degree offered: English language courses offered through an intensive program.</p>	<p>OHIO Admissions procedures: International application. Note for nonnative speakers: application fee. Note for nonnative speakers: application fee. GRE 1200 required for nonnative speakers. English proficiency test required before enrollment fee.</p>
<p>MILWAUKEE UNIVERSITY 1000 East Wisconsin Ave., North Campus, Oshkosh, WI 54901, USA Contact: Director of International Studies Tel: +1 920 424 7333 Fax: +1 920 424 7333 E-mail: admissions@milwaukee.edu Website: www.milwaukee.edu Number of students: 14,000 Number of countries: 140</p>	<p>Milwaukee University is a leading provider of international education in the United States. Faculty members are nationally and internationally recognized for their expertise in their fields. Language of instruction: English. Degree offered: English language courses offered through an intensive program.</p>	<p>OHIO Wide subject offered: Academic, International Studies, Business, Marketing, Liberal Arts, Hospitality, Career Studies, International Studies, Economics, & American Studies. Admissions procedures: Faculty admission. Note for nonnative speakers: application fee. Note for nonnative speakers: application fee. GRE 1200 required for nonnative speakers. English proficiency test required before enrollment fee.</p>
<p>DELAWARE STATE UNIVERSITY 100 College Avenue, Delaware, DE 19821, USA Contact: Admissions Office Tel: +1 302 841 7333 Fax: +1 302 841 7333 E-mail: admissions@delaware.edu Website: www.delaware.edu Number of students: 14,000 Number of countries: 140</p>	<p>Delaware State University is a leading provider of international education in the United States. Faculty members are nationally and internationally recognized for their expertise in their fields. Language of instruction: English. Degree offered: English language courses offered through an intensive program.</p>	<p>DELAWARE Admissions procedures: Note for nonnative speakers: application fee. Note for nonnative speakers: application fee. GRE 1200 required for nonnative speakers. English proficiency test required before enrollment fee.</p>
<p>CENTRAL OREGON COMMUNITY COLLEGE 1000 NE Oregon Street, Bend, OR 97701, USA Contact: Director of International Studies Tel: +1 503 325 7333 Fax: +1 503 325 7333 E-mail: admissions@cecc.edu Website: www.cecc.edu Number of students: 14,000 Number of countries: 140</p>	<p>Central Oregon Community College is a leading provider of international education in the United States. Faculty members are nationally and internationally recognized for their expertise in their fields. Language of instruction: English. Degree offered: English language courses offered through an intensive program.</p>	<p>OREGON Wide subject offered: Academic, International Studies, Business, Marketing, Liberal Arts, Hospitality, Career Studies, International Studies, Economics, & American Studies. Admissions procedures: Faculty admission. Note for nonnative speakers: application fee. Note for nonnative speakers: application fee. GRE 1200 required for nonnative speakers. English proficiency test required before enrollment fee.</p>



What do do next?

If you would like to try CatBase for yourself, you can do so by using the fully functional Demo version. It does everything the complete program does, but is limited to 50 records per table. It comes with a Demo Manual, which takes you through the main features of the program.

To find out more detailed information about any of CatBase's features, the complete Reference Manual is available in PDF document format. This can be downloaded from [our web site](#), or if you already have the Demo CD, you'll find it in the Documentation folder.

If you have any questions, please contact CatBase Software by any of the following methods:

- Send an email to info@catbase.com
- Pick up the phone and dial 0700 CATBASE (0700 2282273)
- Send a fax to 01920 877917

We promise to respond promptly to all enquiries!

If you're convinced that CatBase is what you need, please print out the order form on the next two pages to order your copy.



Order Form Page One



<input type="radio"/>	CatBase LE: £395 (1,000 records per table)	_____
<input type="radio"/>	CatBase Single-User: £695.....	_____
<input type="radio"/>	CatBase Multi-User -- 2 Workstations: £1,795	_____
<input type="radio"/>	CatBase Multi-User -- ____ Workstations (CALL us for price)	_____
<input type="checkbox"/>	XTags (picture import Xtension for QuarkXPress): ____ @ £199:	_____
<input type="checkbox"/>	Indextension (Indexing Xtension for QuarkXPress): ____ @ £99:.....	_____
<input type="checkbox"/>	4DWrite (word processing plug-in; necessary for composing emails, faxes, and mailshots in CatBase): ____ @ £95:	_____
<input type="checkbox"/>	Fax Modem + FaxExpress software: £150 (Macintosh only)	_____
<input type="checkbox"/>	FaxExpress Software Only (plug-in for sending faxes; Macintosh only; suitable modem required): £50	_____
	Subtotal:	£ _____
	Add VAT at 17.5% (UK and EU addresses):	£ _____
	Delivery: UK addresses:	FREE!
	Non-UK Addresses: Airmail: £20	£ _____
	Courier: £50.....	£ _____
	Total:	£ _____

Order Form Page Two



Payment Details

All prices quoted are in £ sterling

Cheque Enclosed Charge my: Visa MasterCard Diners Club BarterCard

Card Number: _____ Expiry Date: _____

Signature: _____

Name: _____

Company: _____

Address: _____

Telephone: _____ Fax: _____ Email: _____

IMPORTANT!!!!

I will be running CatBase on: **Macintosh** **Windows 95/98** **Windows NT**

Note: For CatBase Multi-User, you need to specify the server operating system; the workstations can be any combination of Mac and Windows 95/98/NT. Windows 95/98 is not recommended for a server .

CatBase Software Ltd. FREEPOST SG455, Ware, Herts. SG12 8BR

(50 The Maltings, Stanstead Abbots, Herts. SG12 8HG UK)

Fax: 01920 877917 (+44 1920 877917) Phone: 0700 CATBASE (0700 2282273) Email: sales@catbase.com